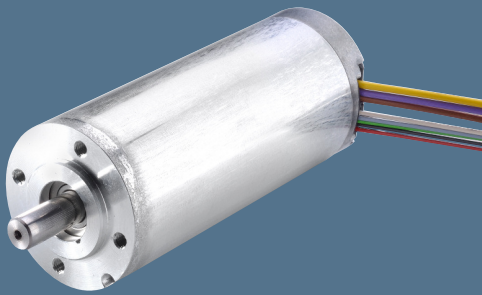


ECI-motor

ECI-42.40



- Highly dynamic 3-phase internal rotor motor in EC technology
- Multi-pole motor design for optimum power density
- Aluminium housing
- Robust ball bearing system for long service life
- Basic motor with electronics module K1 for operation with external drive electronics
- low cogging torque

Nenndaten

Typ		ECI-42.40 B00	ECI-42.40 D00
Nominal voltage (U_{BN})	V DC	24	48
Nominal speed (n_N) (controlled)	min ⁻¹	4000	4000
Nominal torque (M_N)	mNm	220	220
Nominal current (I_{BN})	A	5,1	2,6
Nominal output power (P_N)	W	92	92
Speed at no-load operation (n_l)	min ⁻¹	6500	6500
No-load current (I_{BL})	A	0,4	0,2
Short-term permiss. peak torque (M_{max})	mNm	960	960
Permiss. peak current, motor lead (I_{max})	A	21	10,5
Induced voltage (U_{max})	V/1000 min ⁻¹	4,41	8,38
Terminal resistance (R_V)	Ω	0,49	1,5
Terminal inductance (L_V)	mH	0,5	1,84
Rotor moment of inertia (J_R)	kgm ² x10 ⁻⁶	6,7	6,7
Protection class		IP 40	IP 40
Ambient temperature range (T_U)	°C	0...+40°C	0...+40°C
Motor mass (m)	kg	0,48	0,48
Order No.		932 4240 122	932 4240 123

F_{axial} 30 N
 F_{radial} 75 N L_1 20 mm

Permissible shaft load at nominal speed and life expectancy L_{10} at 20 000 h (at T_U max. 40°C).

Signal line

No.	Colour	Function
4	green	Hall A
3	white	Hall B
8	grey	Hall C
2	red	UB
7	black	Gnd

Winding input lead

No.	Colour	Function
1	yellow	W
5	violet	V
6	brown	U

